

2.2. Assembly and components

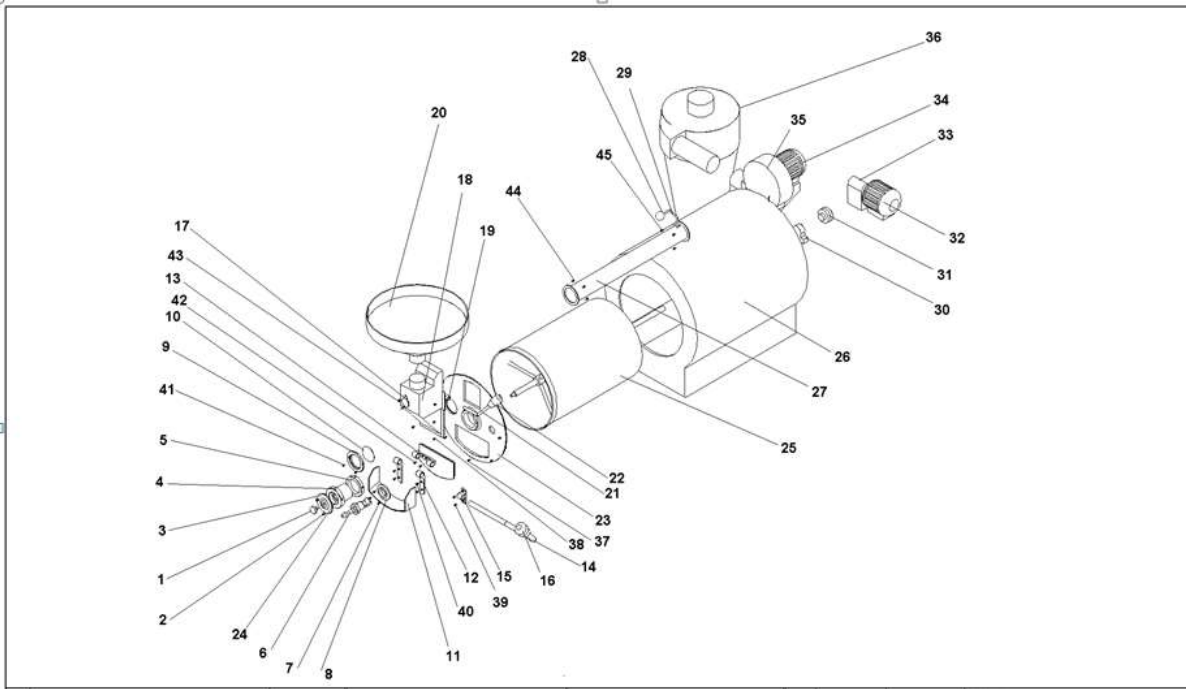


Figure 2:Exploded view of assembly

1	Lubricator	16	Drum cover weight	31	Chain gear
2	Front bearing cover	17	Head cleaner cover	32	Motor
3	M6x15 bolt (x3)	18	Head	33	Reductor gear box
4	Drum adjuster	19	Drum head bushing	34	Upper fan motor
5	Counter nut	20	Hopper	35	Upper fan
6	Sample bar	21	Drum cover shaft	36	Chaff collector
7	M6x20 bolt (x3)	22	Upper head weight	37	M8x20 bolt (x6)
8	Sample bar bearing	23	Front plate	38	M6x15 (x6)
9	Inspection glass bearing	24	Drum adjuster bearing	39	M6x15 (x2)
10	Inspection glass	25	Drum	40	M6x15 (x4)
11	Drum cover closer	26	Body	41	M6x15 (x3)
12	Dynamic drum cover joint	27	Upper air flow pipe	42	M6x15 (x2)
13	Static drum cover joint	28	Drum lever	43	M6x15 (x1)
14	Drum cover shaft	29	Drum lever shaft	44	M6x15 (x4)
15	Drum cover stopper	30	Rear bearing	45	M6x15 (x4)